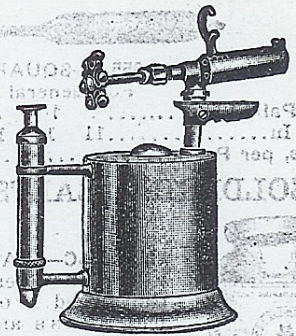
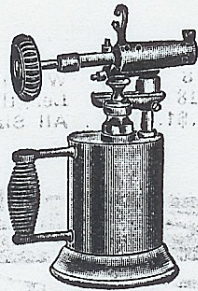
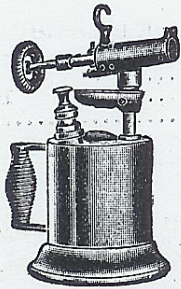




GASOLINE BLOW TORCHES

Detroit



Extra Heavy Polished Brass Tank, Reinforced at Top and Handle; Nickel Plated Wire Handle; Improved Automatic Brass Air Pump in Tank; Lead Gaskets on Filler Plug and Pump prevent leaks; Patented Tapered Burner of Underfeed Type; Made of Special Generating Metal; Vein through which gas flows is in Tube of Burner, super-heating gas and producing hot flame with minimum of gasoline; Heavy Shouldered Needle prevents enlargement of orifice; Has always cool Wire Wheel; For inside or outside use by Repair Men, Plumbers, Electricians, Mechanics and Painters or for Factories.

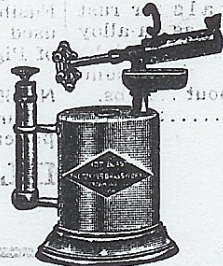
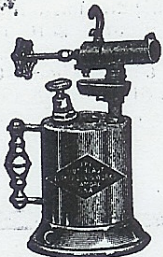
Heavy Gauge Seamless Brass, Reinforced Tank with Concave Bottom and Filler-Plug, with Lead Gasket; Automatic Pump in Handle; Single Piece Straight Tube Burner gives intense blue flame; With Hook and Support for Soldering Coppers; For home use, paint burning, thawing pipes and light repair work.

- Each
- No. 656-1—Capacity 1 Quart; Height Over-all 9 1/4 in., Diam. 4 in.; Consumes 1/2 Pint of Gasoline per Hour.....\$20.55
 - No. 656-2—With Hook and Support for Soldering Coppers; Height Over-all 10 3/4 in.; Otherwise same as above 21.60
- Weight 4 1/2 Lbs. Each

- Each
- No. 656-3—Capacity 1 Pint; Height Over-all 8 in., Diam. 3 1/4 in.; Consumes 1/3 Pint of Gasoline per Hour.....\$18.45
 - No. 656-4—With Hook and Support for Soldering Coppers; Height Overall 9 1/4 in.; Otherwise same as above. 19.50
- Weight 4 Lbs. Each

- Each
- No. 656-20—Capacity 1 Quart; Height Over-all 10 in., Diam. 4 in.; Consumes 1/2 Pint of Gasoline per Hour; Weight 4 1/4 Lbs. Each.....\$18.45
 - No. 656-22—Capacity 1 Pint; Height Over-all 8 3/4 in., Diam. 3 1/4 in.; Consumes 1/3 Pint of Gasoline per Hour; Weight 3 3/4 Lbs. Each..... 16.20

Turner



Automatic Spring Valve Pump; Non-Leaking Filler Plug, Improved Pump Cap and Former; Burner is Closed Generator Type; The Highest Grade Torch of its kind.

Polished, Seamless Brass Tank and Handle; Burner is made of Special Metal to withstand heat; Brass Air Pump; Needle Point Valve.

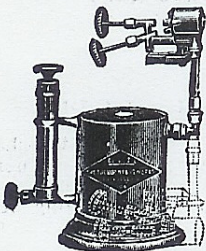
- Each
- No. 656-202—Capacity about 1 Quart; Height Over-all 9 1/4 in., Diam. 4 in.; Consumes about 1/2 Pint of Gasoline per Hour.....\$21.60
- Weight 5 1/2 Lbs. Each

- Each
- No. 656-302—Capacity about 1 Pint; Height Over-all 8 in., Diam. 3 1/2 in.; Consumes about 1/3 Pint of Gasoline per Hour.....\$19.50
- Weight 4 Lbs. Each

- Each
- No. 656-215—Capacity about 1 Quart; Height Over-all 11 in., Diam. 5 1/4 in.; Consumes about 1/2 Pint of Gasoline per Hour.....\$18.45
- Weight 5 1/2 Lbs. Each

- Each
- No. 656-315—Capacity about 1 Pint; Height Over-all 8 3/4 in., Diam. 4 1/2 in.; Consumes about 1/3 Pint of Gasoline per Hour.....\$16.20
- Weight 4 1/2 Lbs. Each

Turner



DOUBLE JET TORCHES

AUTO TORCHES

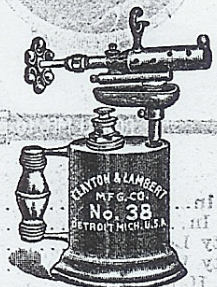
Burner mounted on a Swivel and can be turned on either side of the Tank; The Double Jet produces a hot pointed blue flame of over 3000 degrees Fahrenheit; Specially recommended for light Brazing, Annealing light Metal, Drawing Temper on Tools, and Paint Burning; Non-Leaking Filler Plug, Improved Pump Cap and Former; Made of Heavy Gauge Polished Brass.

For Outdoor or Inside Use; Especially adapted to use of Repair Men, Linemen, Electricians, Plumbers, and all Mechanics; The Attachment to prevent tipping is so formed that when sprung into use it cannot close accidentally or be broken off; Non-Leaking Filler Plug, Automatic Spring Valve Pump, Improved Pump Cap and Former.

- Each
- No. 656-93—Capacity about 1 Quart; Height Over-all 10 3/4 in., Diam. 4 in.; Consumes about 3/4 Pint of Gasoline per Hour.....\$23.10
- Weight 5 Lbs. Each

- Each
- No. 656-418—Capacity about 1 Pint; Height Over-all 8 1/2 in., Diam. 1 3/4 in.; Consumes about 1/4 Pint of Gasoline per Hour.....\$23.85
- Weight 3 3/4 Lbs. Each

Clayton & Lambert



Polished, Seamless Brass Tank and Handle; Burner is made of Special Burner Metal; Brass Air Pump, Needle Point Valve, Wheel Regulator; The Burner, which is a strong Generator, produces an intensely hot blue Needle Point flame, which will give the best of service, whether used indoors, or outside in a strong wind.

- Each
- No. 656-32—Capacity 1 Quart; With Hook and Support for holding Soldering Coppers; Diam. 5 1/4 in., Height 11 in.....\$21.60
- Weight 5 Lbs. Each

- Each
- No. 656-38—Capacity 1 Pint; With Hook and Support for holding Soldering Coppers; Diam. 4 1/4 in., Height 8 3/4 in.....\$19.50
- Weight 3 3/4 Lbs. Each

All Above, One in Box