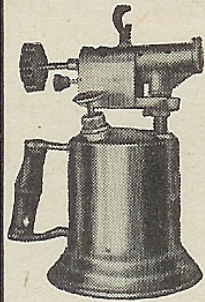


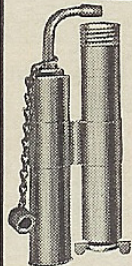
LENK SOLDERING EQUIPMENT



Make your work easier by using LENK PRODUCTS. Known the world over for quality and dependability.

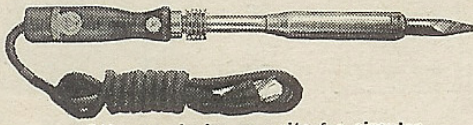
Lenk Gasoline Blotorches are made in seven models, pint and quart capacities. They are fully guaranteed to give lasting service.

Lenk has an inexpensive hand torch—alcohol or gasoline—for the novice or skilled mechanic.



Ask your dealer for Lenk Acid or Rosin Core Solder—from a 10c spool to a 100 pound reel. Try Lenk Super Aluminum Solder.

You will really enjoy using a Lenk Electric Soldering Iron. The most complete popular priced line in the world.



ASK your dealer or write for circular.

THE LENK MFG. COMPANY
NEWTON LOWER FALLS, MASS.

BICYCLES; PARTS & SUPPLIES

Arnold, Schwinn & Co., SM-1718 N. Kildare Ave., Chicago
Mead Cycle Co., 17 So. Market St., Dept. 9, Chicago
Rochester Harley-Davidson Corp., 119 W. Main, Rochester, N. Y.

BIRCHCRAFT SUPPLIES

Fellowcrafters, 64 Stanhope St., Dept. S, Boston, Mass.

BITS; DRILL

Forest City Bit & Tool Co., 1206 Kishwaukee, Rockford, Ill.
Star Bit & Tool Co., 1015 9th St., Rockford, Ill.
Morse Twist Drill & Machine Co., Dept. S, New Bedford, Mass.
Cleveland Twist Drill Co., 1254 E. 45th St., Cleveland, Ohio

BITS, MACHINE; WOODWORKING

Greenlee Tool Co., 2136 Twelfth St., Rockford, Ill.

BLOW TORCHES & FIRE POTS

Justrite Mfg. Co., 2072 Southport Ave., Chicago
Pako Supply Co., 2407 N. Bernard St., Dept. M-1, Chicago

NEW PUMPLESS BLOW TORCH

MAKES SOLDERING EASIER

Has everything mechanics and craftsmen want. Absolutely pumpleless, it's easier to handle and lasts longer—nothing to get out of order. Produces 2200° of clean, blue flame—adjustable from needle point to 6 inches long. Quickly heats all metals for fast efficient soldering, or for melting lead, copper, aluminum, etc. Torch illustrated holds 6 oz. gasoline and burns 4 hours. Rubber friction plugs in base permit tilting torch in any position, equipped with handle. Self-tinning soldering copper and electricians' dip pot available for attaching to end of burner. For other sizes write for circular.



\$6.85
WITH BASE

PAKO SUPPLY CO. DEPT. M-1
2407 N. BERNARD ST. CHICAGO, ILLINOIS

Unique Mfg. Co., Inc., 229 W. Walton St., Chicago
Turner Brass Works, Dept. SM, Sycamore, Ill.

STOP!

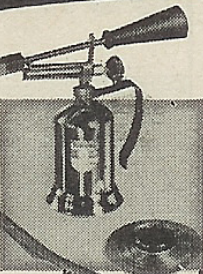
You've been looking for this!

the New TURNER SOLDERING KIT With AUTOMATIC TORCH

Imagine . . . a complete outfit consisting of fine automatic torch that will last for years, octagonal soldering copper, paste, solder and wire scratch brush for only \$2.50. Torch has standard type flame control and shut-off valve with needle point which automatically cleans gas orifice. Develops strong, blue blast flame. Made of seamless drawn brass with funnel bottom for easy filling.

YOUR SATISFACTION GUARANTEED

Ask your dealer for this outfit. If he cannot supply order direct. Try it 10 days at our risk. Money back if not fully satisfied.



NOW ONLY \$2.50 POST PAID

THE TURNER BRASS WORKS, Dept. 4K, Sycamore, Ill.

Reliable Gas Prod. Co., 117 11th St., WS, Cedar Rapids, Iowa
Lenk Mfg. Co., P. O. Box 8, Newton Lower Falls, Mass.
Clayton & Lambert Mfg. Co., 11, 111 French Rd., Detroit, Mich.
Buffalo Dental Mfg. Co., SM559 Ellicott St., Buffalo, N. Y.
Otto Bernz Co., Inc., 284 Lyell Ave., Rochester, N. Y.

BLUEPRINTS; BIRDHOUSES

Chandler Murphy, 4620 W. Lake Harriet Blvd., Minneapolis, Minn.
Weber Mfg. Co., Box 21, Dept. SM, Rocky Point, N. Y.
Craftsman's Model Co., SM2030 N. 41 St., Milwaukee, Wis.

BLUEPRINTS; FURNITURE

Craftsman Wood Service Co., 2729 S. Mary St., Chicago
Craftsman Design Service, Dept. SM-1, Berne, Ind.

OUR FULL-SIZE PLAN FOR THIS BEAUTIFUL CHAIR \$1

ORIGINAL DESIGN — EASY TO BUILD

The creator of this moderne masterpiece is a professional furniture stylist who thoroughly understands home craftsman needs. Full size, traceable plan makes layout quick and easy. Cushion making instructions, also suitable color schemes included, all for only \$1.00 postpaid.



MANY OTHER PLANS

All by practical professional designer. Write for details. Order Plan No. 25 today. Send \$1.00 in M.O. or check. Satisfaction guaranteed.

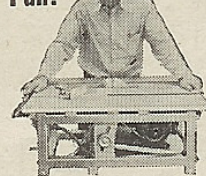
CRAFTSMAN DESIGN SERVICE
Dept. SM Berne, Indiana

Clise Mfg. Co., 50 Cottage Grove, S.W., Grand Rapids, Mich.
Woodcraft Service, Dept. S, Plainview, Minn.
Casein Co. of America, 350 Madison, SM-1140, New York, N. Y.
H. & H. Machinery & Supply Co., 215A St. Clair, Toledo, Ohio
Craftsman's Model Co., SM2030 N. 41 St., Milwaukee, Wis.

BLUEPRINTS; HOME WORKSHOP MACHINERY

Lewis Mach. Tool Co., 2051 Santa Fe, Los Angeles, Calif.
Burroughs & Hale, Dept. SM, Collinsville, Ill.
The Paxson Company, 110 M. Street, Dowagiac, Mich.

It's Fun! Build This BUILDSAW Plans \$1 Only



Buy a Complete Low-Cost Kit

Save up to 60% on this man-size Power Saw! Top 24 x 30 in. Fast, accurate for furniture—boats—repairs—smaller projects too. Rip, cut-off, dado, etc. PORTABLE. Simple, rugged wood-and-steel construction. For 1/2 to 1 h. p. motor. Satisfaction Guaranteed. Send 3c stamp for literature describing kit. Or Mail \$1.00 for easy STEP-BY-STEP PLANS and instructions, TODAY.

PAXSON CO., 110 M. St., Dowagiac, Mich.

Craftsman's House, 315 J Harding St., Avoca, Pa.
Roy Hancock, 323 N. Douglas Ave., Portsmouth, Va.
Delta Mfg. Co., Dept. G-1240, 600 E. Vienna, Milwaukee, Wis.

BLUEPRINTS; LAWN & GARDEN FURNITURE & ORNAMENTS

Craftsman Wood Service Co., 2729 S. Mary St., Chicago
Masonite Corp., 111 W. Washington Blvd., HW-4, Chicago
L. H. Bazuin Co., 76 Auburn Ave., NE, Grand Rapids, Mich.