

# CLAYTON AND LAMBERT BLOW TORCHES

Patented and Exclusively Designed, C&L Tools Start Fast—Control Flame Volume. Burning Life is Long, Fuel Consumption Low.

Mechanics all over the world demand the efficiency and fine appearance of all Clayton and Lambert tools.

Fifty years of continuous efforts in research, experiment and improved methods of manufacture have made C&L tools foremost for quality and dependability.

## Long-Lasting Construction

Finest quality seamless cartridge brass tank joints soldered inside, bottom rolled in and sweat soldered. Valve handles of heat resisting bakelite—cool on the hands. Cast bronze burner develops powerful, steady blue flame that assures intense heat.

**Note:** All torches except Nos. M-600A, M-700A and M-800 equipped with windshield.

Torches Nos. M-158A, M-160A, M-600A, M-700A, and M-800A have sharp pointed needles, not cleaner tips.

## For Gasoline

### Large and Powerful

Used by service stations and garage repair men, railroad shops.

Burner produces 10 inch blast flame which may be closely regulated for ordinary work. Improved internal construction. Supplied with large size pump. Kerosene may be burned by changing the orifice block which will be supplied at no extra



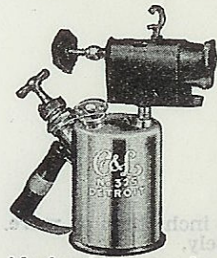
cost if specified. Capacity, 2 quarts. Shipping weight 7 lbs.

M-225 ..... Each \$14.80

## HEAVY DUTY TORCH

### For Gasoline

For work under the most severe weather conditions. Produces a blue blast more than ten inches long which may be regulated for ordinary work. Improved internal vein construction. Large pump produces ample pressure quickly. Regularly supplied for burning gasoline—kerosene may be burned by changing orifice



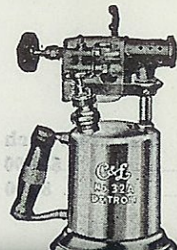
block which can be supplied at no extra cost if specified. Capacity 1 quart. Shipping weight 5½ lbs.

M-325 ..... Each \$11.60

## MECHANIC'S FAVORITE

### For Extra Severe Work For Gasoline

M-32A performs perfectly either indoors or outdoors under severe weather conditions. Burner produces intensely hot blue blast 7 inches long which may be regulated for lighter work. Wind shield protects the gas generator in cold and windy weather. Gas orifice of the burner let is automatically



## MECHANIC'S TOOL KIT TORCH

### For Gasoline

Burner produces 5½ inches long flame which may be regulated. Tank drawn from seamless cartridge brass and shaped not to tip over easily. Compactly built to stand rough handling. Size thickness 2 inches, length 5 inches, height 9½ inches.



Capacity one pint. Shipping weight 4½ pounds.

M-252 ..... Each \$9.30

## MECHANIC'S TORCH

### For Gasoline

M-238 similar to M-32A, but is smaller and fitted with smaller self-cleaning burner.



Capacity one pint. Shipping weight 4½ lbs.

M-238 ..... Each \$7.60

## Medium Priced MECHANIC'S TORCH

### For Gasoline

Remarkable value in medium priced mechanic's grade torch. Produces intensely hot blue blast which may be regulated for lighter work.



Capacity 1 quart. Shipping weight 4¾ pounds.

M-144A ..... Each \$7.60

## CHROME FINISHED TORCHES

### For Gasoline

Burner made of extra high grade bronze. Bakelite control valve wheel. Supplied with red handle grip, windshield and quick acting T-handle pump. Filler plug. Interlocking fittings used throughout. Capacity 1 quart. Shipping weight 4¾ pounds.



M-158A ..... Each \$6.00

### For Gasoline

Burner made of extra high grade bronze. Bakelite control valve wheel. Windshield. Chrome plated brass finished tank, with red handle grip and fitted with quick acting T-handle pump and filler plug. Interlocking fittings are used throughout. Capacity 1 pint. Shipping weight 4 pounds.



M-160A ..... Each \$6.00

## HIGH VALUE TORCH

### For Gasoline

Highly finished buffed brass tank, with concave bottom fitted with brass filler plug and neat red handle grip. Has tapered burner tube closed at the back, producing hot, well controlled flame. Quick acting pump. Interlocking fittings are used throughout. Capacity 1 quart. Shipping weight 4¾ lbs.



M-600A ..... Each \$5.40

## SERVICEABLE TORCH FOR



Supplied with large size pump. Kerosene may be burned by changing the orifice block which will be supplied at no extra

cost if specified. Capacity, 2 quarts. Shipping weight 7 lbs.

M-225 ..... Each # \$14.80

### HEAVY DUTY TORCH

For Gasoline



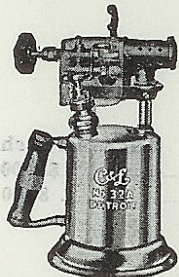
For work under the most severe weather conditions. Produces a blue blast more than ten inches long which may be regulated for ordinary work. Improved internal vein construction. Large pump produces ample pressure quickly. Regularly supplied for burning gasoline—kerosene may be burned by changing orifice

block which can be supplied at no extra cost if specified. Capacity 1 quart. Shipping weight 5 1/4 lbs.

M-325 ..... Each \$11.60

### MECHANIC'S FAVORITE

For Extra Severe Work  
For Gasoline



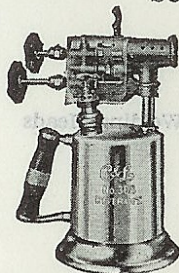
M-32A performs perfectly either indoors or outdoors under severe weather conditions. Burner produces intensely hot blue blast 7 inches long which may be regulated for lighter work. Wind shield protects the gas generator in cold and windy weather. Gas orifice of the burner jet is automatically cleaned but never enlarged

by the control needle cleaner tip. Greatly improved internal vein construction results in unusually long burning life. Torch is ruggedly constructed and designed for extra severe service. Capacity one quart. Shipping weight 5 lbs.

M-32A ..... Each \$9.60

### SUB BURNER TORCH

For Gasoline



M-308 is M-32A type plus positive burner generating device operated by the lower needle. During starting, pre-heater directs intense blast (1800 degrees) against vaporizing veins of gas generator. Burner produces hot blue blast flame which may be reduced to small flame, using upper valve needle for light work. Wind shield protects gas generator during outdoor use. No. M-308 unusually economical. Pre-heater may be used to keep gas generator hot and ready for instant use at all times; the operator opening the main burner only when desiring the powerful blast flame.

Capacity one quart. Shipping weight 5 1/2 lbs.

M-308 ..... Each \$10.60

One torch in a carton.



5 inches, length 5 inches, height 9 1/2 inches.

Capacity one pint. Shipping weight 4 1/2 pounds.

M-252 ..... Each \$9.30

### MECHANIC'S TORCH

For Gasoline



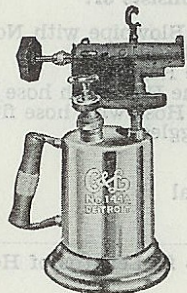
M-238 similar to M-32A, but is smaller and fitted with smaller self-cleaning burner.

Capacity one pint. Shipping weight 4 1/4 lbs.

M-238 ..... Each \$7.60

### Medium Priced MECHANIC'S TORCH

For Gasoline



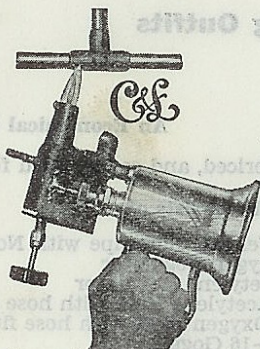
Remarkable value in medium priced mechanic's grade torch. Produces intensely hot blue blast which may be regulated for lighter work.

Capacity 1 quart. Shipping weight 4 3/4 pounds.

M-144A ..... Each \$7.60

### RESIDENTIAL PLUMBING SIZES

For Copper Tubing  
Work



For Gasoline

The sizes of copper tubing and fittings, by the plumber can be sweated best with a small blue flame. No. M-99 torch has a small pointed flame at reduced flame. The flame 3/8 inch in diameter by 1 3/4 inches long at reduced flame.

When opened wide the flame is 1/2 inch in diameter and 5 inches long. The curved internal fuel feed pipe and heavy wicking allow this torch to burn in any position. Because of the small size of the pint capacity tank, it will go into close quarters.

No. 99 has all of C&L's high grade features.

Capacity 1 pint. Shipping weight 4 1/4 lbs.

M-99 ..... Each \$7.30

One torch in a carton.



Inner plug. Interlocking fittings used throughout. Capacity 1 quart. Shipping weight 4 3/4 pounds.

M-158A ..... Each \$6.00

### For Gasoline



Burner made of extra high grade bronze. Bakelite control valve wheel. Windshield. Chrome plated brass finished tank, with red handle grip and fitted with quick acting T-handle pump and filler plug. Interlocking fittings are used throughout. Capacity 1 pint. Shipping weight 4 pounds.

M-160A ..... Each \$6.00

### HIGH VALUE TORCH

For Gasoline



Highly finished buffed brass tank, with concave bottom fitted with brass filler plug and neat red handle grip. Has tapered burner tube closed at the back, producing hot, well controlled flame. Quick acting pump. Interlocking fittings are used throughout. Capacity 1 quart. Shipping weight 4 3/4 lbs.

M-600A ..... Each \$5.40

### SERVICEABLE TORCH FOR ODD JOBS

For Gasoline



Heavy gauge brass tank, highly polished. C&L patented interlocking fittings used at all tank openings. High grade bronze burner, fitted with removable burner hook, and produces hot blue flame. Pump equipped with two valves, filled by removing pump. Neat red handle set at a comfortable angle. Capacity 1 quart. Shipping weight 4 pounds.

M-800 ..... Each \$4.50

### PAINT BURNING NOZZLES

For C&L Blow Torches



Can be easily applied to Clayton and Lambert torches. M-158-A, M-600-A or M-800 quart size, and Nos. M-160-A or M-700-A pint size to produce flat fan-shaped flame 3 to 3 1/2 inches wide for burning paint. Can be applied to produce either horizontal or vertical fan-shaped flame.

M-1—P B N ..... Each \$1.10

One torch in a carton.

Retail prices quoted above are those found to be prevailing in the Cleveland area. Freight to destination should be added.

\* Goods marked thus (\*) are not carried in stock and can be furnished only by shipment direct from factory.

# PRESTOWELD

## FOR SUPERIOR WELDING

Long years of experience have proven Prest-O-Weld and Prest-O-Lite products superior for welding and cutting requirements. Products cast from finest metals obtainable—built to last for many years and give excellent service. Swaged-type tips. The one piece tips are swaged of pure copper, a material which tends to dissipate heat.

Inside bore is exactly proportioned and smoothly finished. Another service offered by Prest-O-Weld is that changing from welding to cutting, is a matter of but a few seconds with the use of cutter attachment.

## Combination Welding and Cutting Outfits

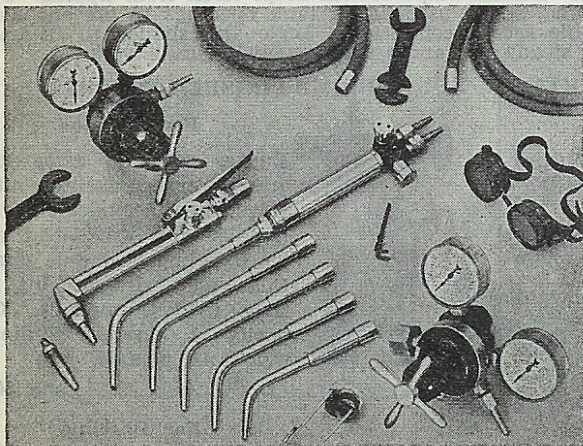
### For General Welding and Occasional Cutting

For use in shops where alternate welding and cutting is done. Has a complete range of welding from 32 gauge sheets up to plate 1 inch thick or more. The regulators are heavy-duty type and regulate the flow of gases accurately.

M-W111CO Combination Outfit consists of:

- 1 M-W111 Welding Blowpipe with Nos. M-3, M-5, M-7, M-9 and M-11 Welding Heads
- 1 M-CW111 Cutting Attachment with Nos. M-1 and M-2 nozzles
- 1 M-R109 Oxygen Regulator
- 1 M-R103 Acetylene Regulator
- 1 1/2 ft. 1/4-in. Acetylene Hose with hose fittings
- 1 1/2 ft. 1/4-in. Oxygen Hose with hose fittings
- 1 Pair No. M-16 Goggles
- Friction Lighter
- Wrenches
- 1 Instruction Manual

‡M-W111CO ..... **Mfr's List Each** **\$105.00**  
 ‡M-W111CO with 25 ft. lengths of Hose ..... **108.00**



## Welding Outfits

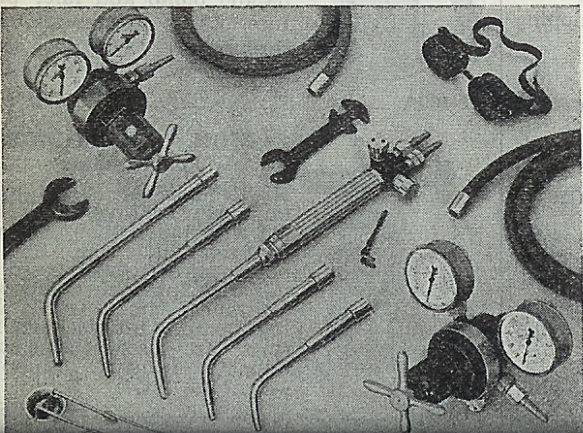
### High Quality Outfit for All-purpose Welding

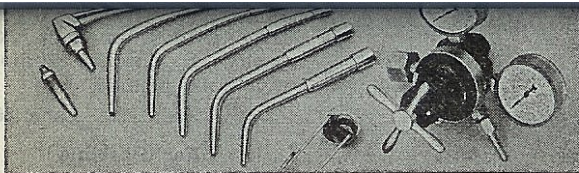
Is for a complete range of welding from 32-gauge sheet up to plate 1 inch thick or more. The regulators are heavy-duty, and regulate the flow of gases accurately.

M-W111WO Outfits consists of:

- 1 M-W111 Welding Blowpipe with Nos. M-3, M-5, M-7, M-9 and M-11 Welding Heads
- 1 M-R109 Oxygen Regulator
- 1 M-R103 Acetylene Regulator
- 1 1/2 ft. 1/4-in. Acetylene Hose with hose fittings
- 1 1/2 ft. 1/4-in. Oxygen Hose with hose fittings
- 1 Pair No. M-16 Goggles
- Friction Lighter
- Wrenches
- 1 Instruction Manual

‡M-W111WO ..... **Mfr's List Each** **\$81.00**  
 ‡M-W111WO with 25 ft. Lengths of Hose ..... **84.00**





1 1/2 ft. M-10 Oxygen Hose with hose fittings

Friction Lighter

Wrenches

1 Instruction Manual

‡ M-W111CO

‡ M-W111CO with 25 ft. lengths of Hose

Mfr's List Each

\$105.00

108.00

## Welding Outfits

### High Quality Outfit for All-purpose Welding

Is for a complete range of welding from 32-gauge sheet up to plate 1 inch thick or more. The regulators are heavy-duty, and regulate the flow of gases accurately.

M-W111WO Outfit consists of:

1 M-W111 Welding Blowpipe with Nos. M-3, M-5, M-7, M-9 and M-11 Welding Heads

1 M-R109 Oxygen Regulator

1 M-R103 Acetylene Regulator

12 1/2 ft. 1/4-in. Acetylene Hose with hose fittings

12 1/2 ft. 1/4-in. Oxygen Hose with hose fittings

1 Pair No. M-16 Goggles

Friction Lighter

Wrenches

1 Instruction Manual

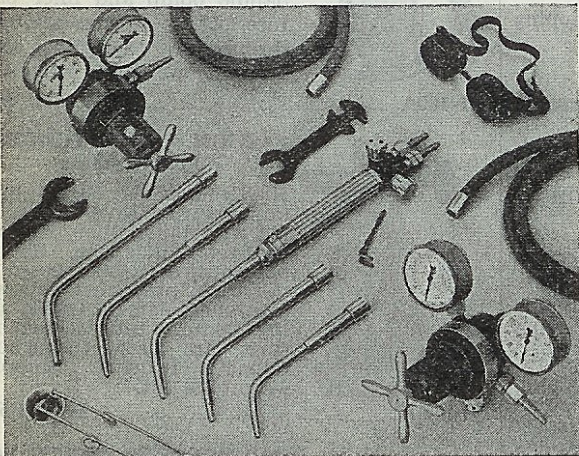
‡ M-W111WO

‡ M-W111WO with 25 ft. Lengths of Hose

Mfr's List Each

\$81.00

84.00



## Welding Outfits

### An Economical Outfit for General Welding

Is moderately priced, and can be used for a wide range of welding.

M-W111A Outfit consists of:

1 M-W111 Welding Blowpipe with Nos. M-3, M-5, M-7, M-9 and M-11 Welding Heads

1 M-R110 Oxygen Regulator

1 M-R111 Acetylene Regulator

12 1/2 ft. 1/4-in. Acetylene Hose with hose fittings

12 1/2 ft. 1/4-in. Oxygen Hose with hose fittings

1 Pair No. M-16 Goggles

Friction Lighter

Wrenches

1 Instruction Manual

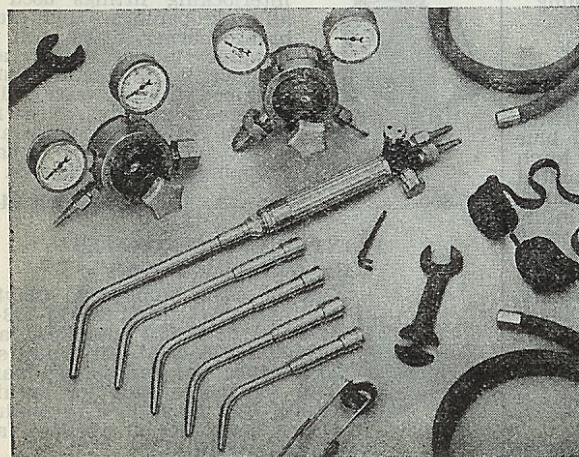
‡ M-W111A

‡ M-W111A with 25 ft. Lengths of Hose

Mfr's List Each

\$66.00

69.00



Retail prices quoted above are those found to be prevailing in the Cleveland area. Freight to destination should be added.

‡ Goods marked thus (‡) are not carried in stock and can be furnished only by shipment direct from factory.