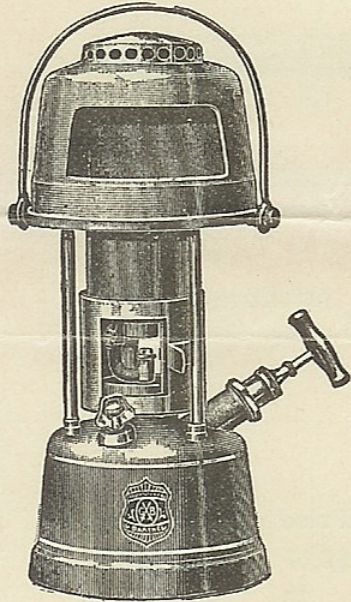


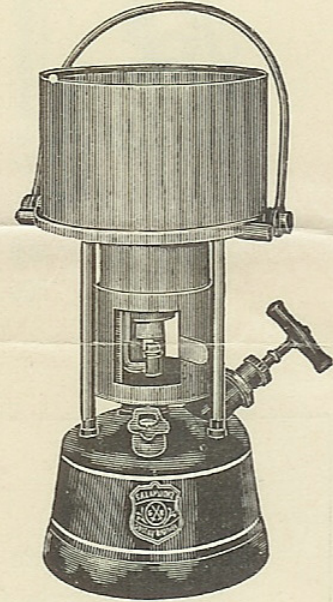
ORIGINAL  BARTHEL

Old Model Re-instated Due to Popular Demand

"B" Hood



"C" Hood



With Improved Pump and
Filler Cap

Regulated through
Air Release

For Kerosene K
For Gasoline G

RELIABLE—POWERFUL—SIMPLE

With Straight Type Burner—NO COILS

No. **2**—4 Quarts

Without hood - - \$14.00
"C" Hood - - - 1.00
"B" Hood - - - 2.00

No. **3**—6 Quarts

Without hood - - \$23.00
"C" Hood - - - 3.00
"B" Hood - - - 5.00

The Container is made of a special grade of pressed laminated steel, autogen welded; seamless; cannot rust; will withstand any inner surplus pressure; practically indestructible.

A FEW POINTERS

If you're losing pressure, see that the pump, the burner head, and the filler cap are screwed in tight

Keep the pump washer soft with an occasional few drops of oil.

If the nozzle is choked, use the cleaning needle. But do not enlarge the nozzle hole.

After considerable use, the burner head should be thoroughly cleaned.

All channels must be gone thru, and if necessary, the wire gauze replaced.

Before screwing back on the tank, grease the threads with soft soap.

Caution—it is dangerous to expose the tank to heat of any kind.

VAN PRAAG SALES CORPORATION

EXCLUSIVE SELLING AGENTS

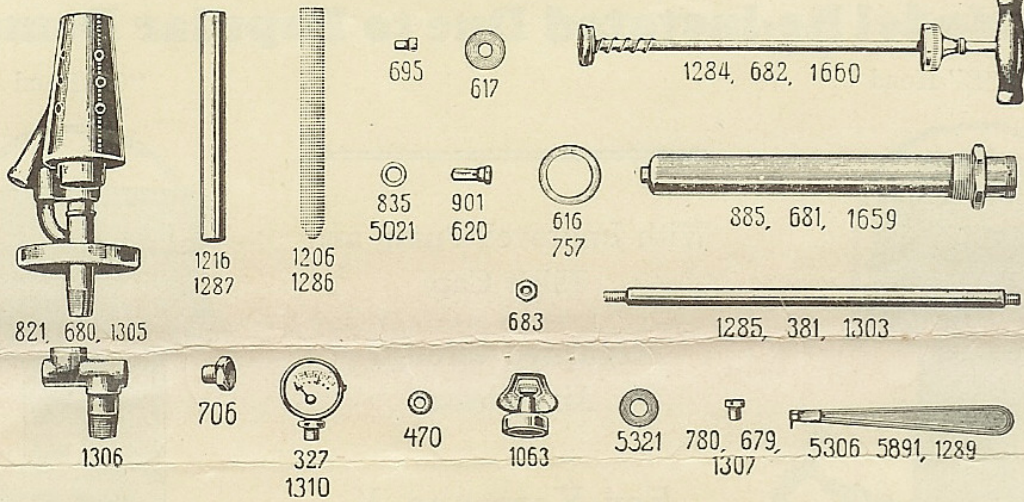
22 EAST 17th STREET

NEW YORK CITY

ORIGINAL



BARTHEL



	1		2		3	
	No.	Price	No.	Price	No.	Price
Burner, Complete	821.....	\$5.00	680.....	\$6.00	1305.....	\$8.00
Burner Nozzle (kerosene)	780.....	.35	679.....	.35	1307.....	.40
Burner Nozzle (gasoline)	679.....	.35	668.....	.35	726.....	.40
Wire Gauze	1206.....	.20	1286.....	.25	1304.....	.25
Wire Gauze Holder			1287.....	.40	1288.....	.40
Plug Screw	695.....	.10	695.....	.10	695.....	.10
Cleaning Needles (kerosene)	5306.....	.15	5891.....	.15	5891.....	.15
Cleaning Needles (gasoline)	5891.....	.15	5372.....	.15	5372.....	.15
Filler Cap	1063.....	.75	1063.....	.75	1063.....	.75
Washer for same	614.....	.05	614.....	.05	614.....	.05
Top Casting and Handle		1.75		2.00		4.00
Pressure gauge.....						3.00
Windshield, complete		2.00		2.50		3.00
Improved Pump complete			6060.....	3.00		
Pump, complete	1681.....	2.25	1682.....	2.50	1683.....	3.00
Pump Cylinder	885.....	1.00	681.....	1.25	1659.....	1.50
Lead washer for same	616.....	.05	757.....	.05	757.....	.05
Check Valve	901.....	.50	642.....	.50	5022.....	.50
Washer for same	835.....	.05	621.....	.05	5021.....	.05
Pump Plunger, complete	1284.....	1.00	682.....	1.00	1660.....	1.25
Plunger Washer	617.....	.10	617.....	.10	5035.....	.10
Upright Standard.....	1285.....	.20	381.....	.25	1303.....	.30
Nut for same.....	683.....	.05	683.....	.05	683.....	.05
Hood	B.....	2.00	B.....	2.00	B.....	5.00
Hood	C.....	1.00	C.....	1.00	C.....	3.00